



1500 Blair Road, Carteret, NJ 07008



A Superior Location.

With a dynamic and evolving economy centered around New York City, the Northern New Jersey industrial market is well-positioned for future growth. 1500 Blair Road is a newly constructed facility with immediate I-95 access and proximity to Newark Airport and Port Elizabeth. Superior logistical access to the New Jersey Turnpike via Exit 12 and Routes 1 & 9, and within 30 minutes from Midtown Manhattan.

Specifications

156,067 sq. ft.
AVAILABLE

3,066 sq. ft.
OFFICE AREA

36'
CLEAR HEIGHT

52' x 52'
COLUMN SPACING

17 (9' x 10')
DOCK DOORS

1 (12' x 14')
DRIVE-IN DOORS

58 spaces
AUTO PARKING

**2,000 Amps, 277/280v,
3-phase, 4-wire**
POWER

ESFR
SPRINKLERS

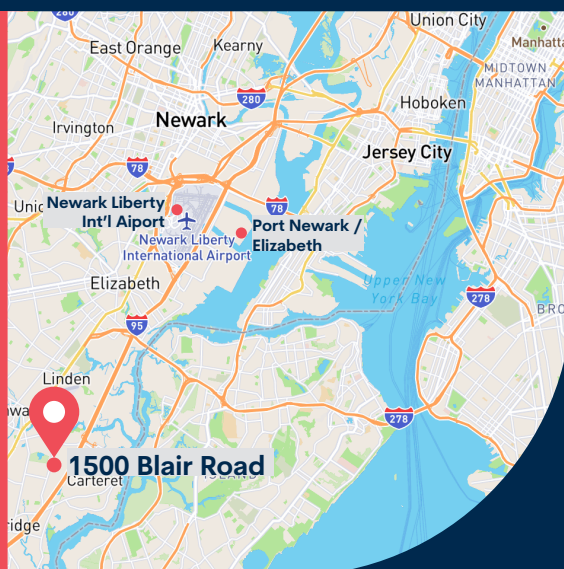
Immediate
OCCUPANCY

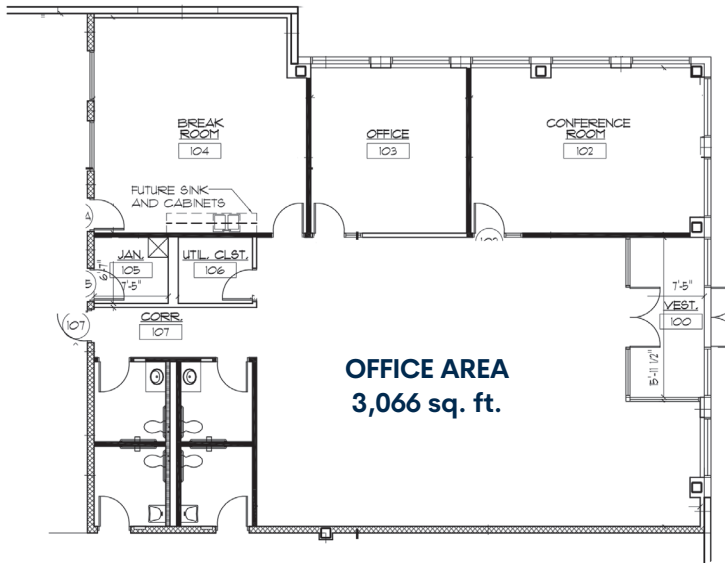
**125' Truck Court Depth,
with a 60' Concrete Apron**

**6-acre bulk distribution
facility**

2018 Year Built

**Access via Exit 12 of the
New Jersey Turnpike**





SITE AREA

In S.F.	257,440 sq. ft.
In Acres	5.91 AC

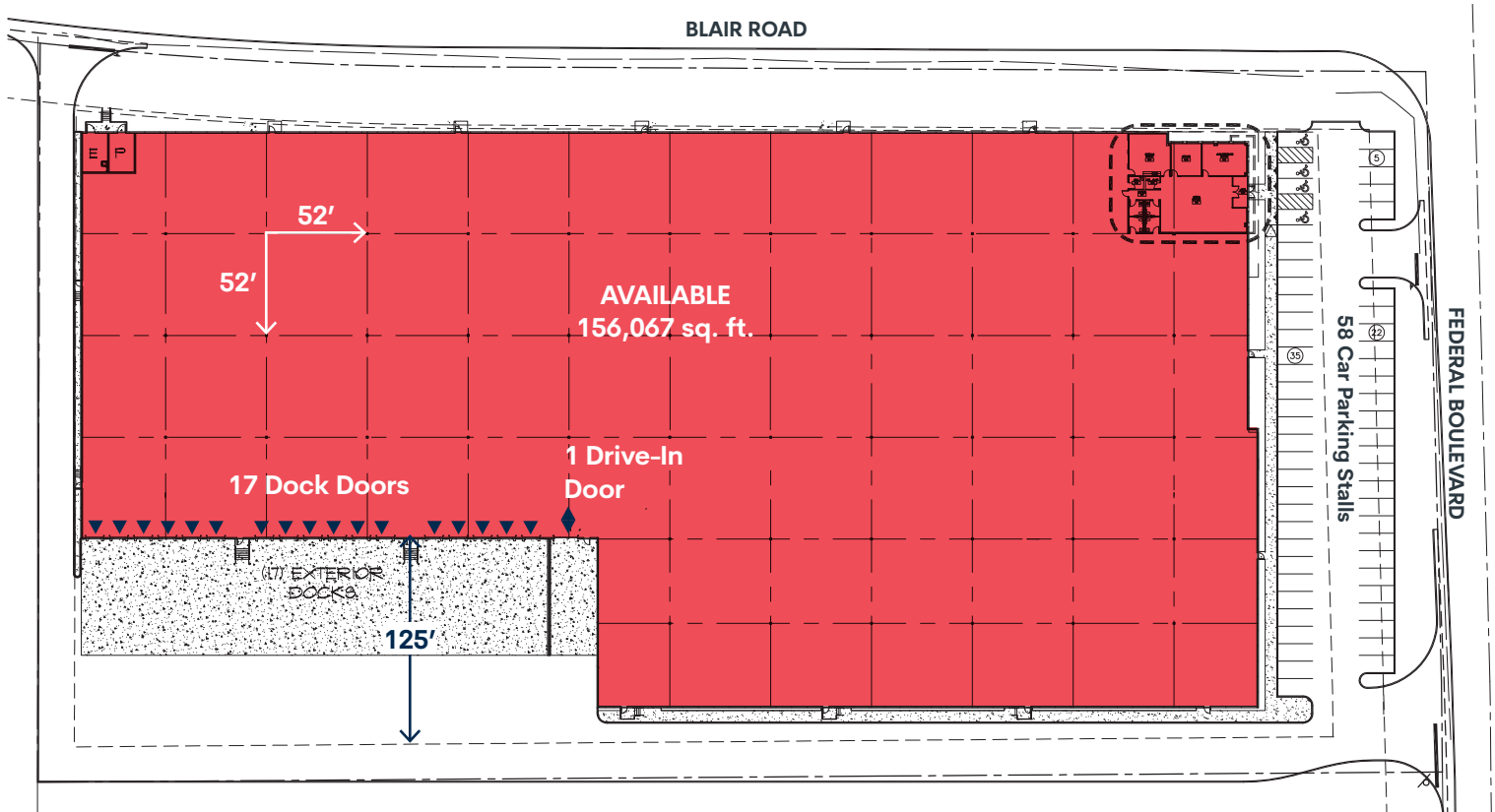
BUILDING AREA

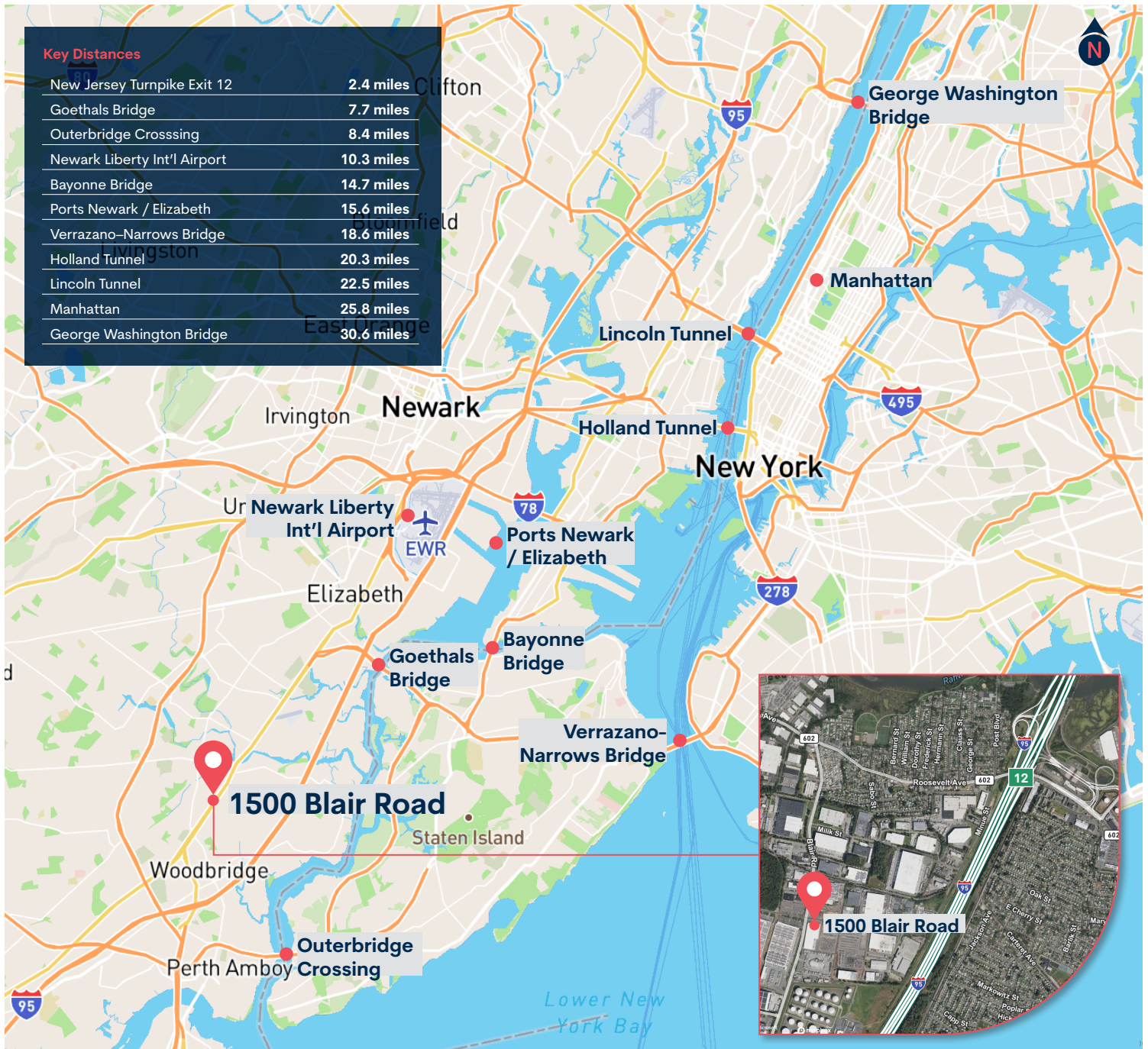
Office	3,066 sq. ft.
Warehouse	153,001 sq. ft.
TOTAL	156,067 sq. ft.

PARKING

Auto	58 stalls
------	-----------

This is a conceptual plan. It is based on preliminary information which is not fully verified and may be incomplete. It is meant as a comparative aid in examining alternate development strategies and any quantities indicated are subject to revision as more reliable information becomes available.





1500blair.com

Contacts

CBRE

Thomas F. Monahan
O 201.712.5610
C 973.568.6614
thomas.monahan@cbre.com

Larry Schiftenhaus
O 201.712.5809
C 201.532.5092
larry.schiftenhaus@cbre.com

Brian Golden
O 201.712.5601
C 732.284.8451
brian.golden@cbre.com

Brookfield Properties

Kyle McGrady
D 201.514.1985
kyle.mcgrady@brookfieldproperties.com